

Current part is item (8) on diagram. Available at www.oshkoshequipment.com

(1) (a) FIG. NO.	(2) (b) ITEM NO.	(3) SMR CODE	(4) NATIONAL STOCK NUMBER	(5) PART NUMBER	(6) FSCM DESCRIPTION USABLE ON CODE	(7) U/M	(8) INC IN UNIT
4701-INSTRUMENTS(CONT'D)							
346	3	PAOZZ	6680-00-864-3018	8380685	19207 SLEEVE AND SEAL	EA	1
346	4	PAOZZ	2520-00-706-5891	7065891	19207 ADAPTER, SHAFT: DRIVE ADAPTER	EA	1
347	1	PAOZZ	5310-00-959-1488	MS51922-21	96906 NUT, SELF-LOCKING AB, AC	EA	1
347	2	PAOZZ	5305-00-269-2801	MS90726-58	96906 SCREW, CAP, HEXAGON HEAD AB, AC	EA	1
347	3	PAOZZ	5340-00-053-8994	MS21333-126	96906 CLAMP, LOOP AB, AC	EA	1
347	4	PAOZZ	5310-00-959-7600	MS51922-5	96906 NUT, SELF-LOCKING AA	EA	1
347	5	PAOZZ	5305-00-068-0504	MS90726-3	96906 SCREW, CAP, HEXAGON HEAD AA	EA	1
347	6	PAOZZ	5340-00-053-8994	MS21333-126	96906 CLAMP, LOOP: FLEXIBLE SHAFT TO DASH AA	EA	1
347	7	PAOZZ	5325-00-174-9038	MS35489-20	96906 GROMMET: SPEEDOMETER DRIVE SHAFT	EA	1
347	8	PAOZZ	6680-00-737-2728	MS51071-10	96906 SHAFT ASSEMBLY, FLEXIBLE: W/CASING AND CORE AA, AB	EA	1
347	8	PAOZZ	6680-00-089-2005	MS51071-9	96906 SHAFT ASSEMBLY, FLEXIBLE: W/CASING AND CORE AC	EA	1
347	9	PAOZZ	5310-00-753-9688	7539688	19207 WASHER, FLAT: SEALING, DRIVE SHAFT, LOWER	EA	1
347	10	PAOZZ	6680-00-695-7189	MS51072-10	96906 CORE, FLEXIBLE SHAFT: 86-5/32 IN LG AA, AB	EA	1
347	10	PAOZZ	6680-00-741-8491	MS51072-9	96906 CORE, FLEXIBLE SHAFT: 78-21/32 IN LG AC	EA	1
347	11	PAOZZ	5330-00-753-9689	7539689	19207 GASKET: SPEEDOMETER, END	EA	1
347	12	PAOZZ	5310-00-532-9467	5329467	19207 WASHER, SLOTTED: TRANSFER END	EA	1
347	13	PAOZZ	5310-00-934-9751	MS35650-302	96906 NUT	EA	2
347	14	PAOZZ	5310-00-045-3296	MS35338-43	96906 WASHER, LOCK	EA	2
347	15	PAOZZ	6680-00-737-2727	7372727	19207 BRACKET: MOUNTING, SPEEDOMETER TO INSTRUMENT CLUSTER	EA	1
347	16	PAOZZ	6680-00-933-3599	MS39021-2	96906 SPEEDOMETER ASSEMBLY	EA	1
348	1	PAOZZ	3010-00-040-2078	8328013	19207 JOINT: ANGLE DRIVE ADAPTER, RATIO 2.00 TO 1.00 90°, AUXILIARY GOVERNOR (USE ON VEHICLE M49, M49C, M50, M60, M108) AA	EA	1
348	2	PAOZZ	4730-00-250-7905	7412917	19207 FITTING, LUBRICATION: DRIVE ADAPTER, PRESSURE VENT RELEASE AA	EA	1
348	3	XA		100890	57733 BUSHING AA	EA	1
348	4	XA		99669	57733 BEARING AA	EA	1
348	5	XA		7529284	19207 WASHER AA	EA	2
348	6	XA		418815	57733 GEAR AA	EA	1



Current part is item (8) on diagram. Available at www.oshkoshequipment.com

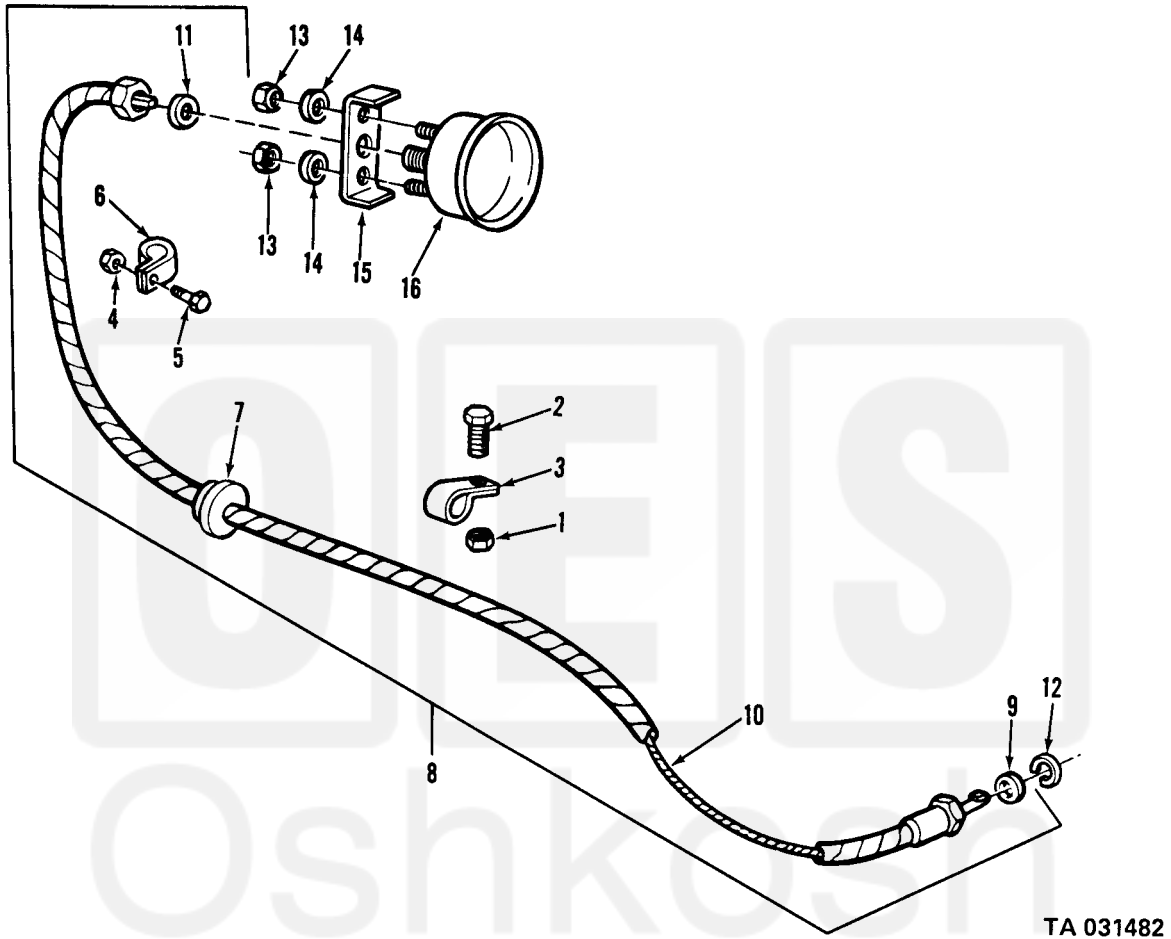


Figure 347. Gages - speedometer and cable.